

July 23, 2008

**LEGAL DESCRIPTION
ANNEXATION TERRITORY**

Situated in Sections 17 & 18, Town 4, Range 2, Deerfield Township, Warren County, Ohio, being a territory to be annexed to the City of Mason the boundary of which being more particularly described as follows:

Beginning at the northwest corner of a 52.718 acre tract being conveyed to Kings/71 in Official Record 2852, Page 530;

Thence along the east right-of-way of Interstate Route 71 the following six calls:

1. S27°16'20"W, a distance of 584.84 feet;
2. S39°19'43"W, a distance of 400.03 feet;
3. S43°51'03"W, a distance of 379.65 feet;
4. S26°58'35"W, a distance of 284.68 feet;
5. S17°43'53"W, a distance of 438.20 feet;
6. S14°06'14"W, a distance of 137.30 feet;

Thence S86°23'23"E, a distance of 103.36 feet;

Thence S36°27'16"W, a distance of 285.53 feet;

Thence N21°11'29"W, a distance of 62.58 feet;

Thence along the aforesaid right-of-way on Interstate Route 71, S73°54'33"W, a distance of 358.42 feet;

Thence S00°38'44"W, a distance of 148.27 feet;

Thence S89°21'16"E, a distance of 268.00 feet;

Thence along the right-of-way of Kings Center Court the following ten courses:

1. along a curve to the left a distance of 129.63 feet, said curve having a radius of 45.00 feet and a chord bearing S63°18'42"E, a distance of 89.23 feet;

Cincinnati, OH

Columbus, OH

Dayton, OH

Sierra Vista, AZ

www.kleingers.com

6305 Centre Park Drive
West Chester, Ohio 45069

(513) 779-7851
FAX (513) 779-7852

2. along a curve to the right a distance of 21.69 feet, said curve having a radius of 22.00 feet and a chord bearing N62°24'21"E, a distance of 20.82 feet;
3. S89°21'16"E, a distance of 322.84 feet;
4. along a curve to the right a distance of 31.08 feet, said curve having a radius of 160.00 feet and a chord bearing S83°47'22"E, a distance of 31.03 feet;
5. along a curve to the right a distance of 69.91 feet, said curve having a radius of 34.50 feet and a chord bearing S20°10'33"E, a distance of 58.55 feet;
6. along a curve to the left a distance of 33.09 feet, said curve having a radius of 160.00 feet and a chord bearing S43°47'49"W, a distance of 33.03 feet;
7. S49°43'15"W, a distance of 123.52 feet;
8. along a curve to the left a distance of 266.81 feet, said curve having a radius of 190.00 feet and a chord bearing S09°29'29"W, a distance of 245.43 feet;
9. S30°44'17"E, a distance of 103.71 feet;
10. along a curve to the right a distance of 20.94 feet, said curve having a radius of 34.50 feet and a chord bearing S13°20'20"E, a distance of 20.62 feet;

Thence S34°16'02"E, a distance of 100.19 feet;

Thence along the right-of-way of Kings Island Drive the following five courses:

1. N59°15'45"E, a distance of 203.45 feet;
2. along a curve to the left a distance of 781.11 feet, said curve having a radius of 869.02 feet and a chord bearing N33°30'46"E, a distance of 755.08 feet;
3. N07°45'45"E, a distance of 251.94 feet;
4. along a curve to the right a distance of 38.83 feet, said curve having a radius of 25.00 feet and a chord bearing N52°15'36"E, a distance of 35.04 feet;
5. N06°45'36"E, a distance of 3.39 feet

Thence along the right-of-way of Kings Mill Road S83°13'20"E, a distance of 878.41 feet;

Thence S11°29'20"W, a distance of 249.91 feet;

Thence S59°13'20"E, a distance of 126.00 feet;

Thence along the westerly right-of-way of Columbia Road S30°46'40"W, a distance of 1095.57 feet;

Thence along the north right-of-way of Wilson Avenue the following five courses:

1. S89°18'33"W, a distance of 423.50 feet;
2. N88°20'00"W, a distance of 287.74 feet;
3. N85°17'27"W, a distance of 504.13 feet;
4. along a curve to the right a distance of 72.85 feet, said curve having a radius of 75.00 feet and a chord bearing N57°27'49"W, a distance of 70.02 feet;
5. N29°38'11"W, a distance of 199.95 feet;

Thence along the aforesaid right-of-way of Kings Island Drive N59°15'53"E, a distance of 96.27 feet

Thence N29°14'39"W, a distance of 405.00 feet;

Thence S60°45'23"W, a distance of 172.20 feet;

Thence N50°45'44"W, a distance of 15.05 feet;

Thence S60°45'26"W, a distance of 135.39 feet;

Thence N44°04'20"W, a distance of 490.83 feet;

Thence along the aforesaid right-of-way of Interstate Route 71 the following four courses:

1. S52°00'47"W, a distance of 83.07 feet;
2. S36°12'29"W, a distance of 392.30 feet;
3. S42°37'00"W, a distance of 501.22 feet;
4. S38°36'45"W, a distance of 1891.56 feet;

Thence along the existing Mason Corporation Line N51°23'15"W, a distance of 300.00 feet;

Thence along said Corporation Line and with the aforesaid north right-of-way of Interstate Route 71 the following fourteen courses:

1. N38°36'45"E, a distance of 1591.56 feet;
2. N31°29'15"E, a distance of 201.54 feet;
3. N39°23'23"E, a distance of 598.55 feet;
4. N32°49'28"E, a distance of 285.47 feet;
5. N16°55'11"E, a distance of 256.74 feet;
6. N01°43'32"W, a distance of 232.08 feet;
7. N03°36'45"E, a distance of 200.00 feet;
8. N43°42'29"E, a distance of 170.01 feet;
9. N66°41'58"E, a distance of 389.36 feet;
10. N56°23'27"E, a distance of 563.50 feet;
11. N48°58'39"E, a distance of 197.02 feet;
12. N36°38'52"E, a distance of 595.33 feet;
13. N41°28'29"E, a distance of 400.51 feet;
14. N38°36'41"E, a distance of 273.80 feet;

Thence S85°01'36"E, a distance of 360.35 feet to the Point of Beginning.

Annexation containing 103.606 acres more or less.

APPROVED FOR ANNEXATION

BY THE COMMISSIONERS OF WARREN COUNTY, OHIO ON THIS DAY OF 2008.

COMMISSIONER

COMMISSIONER

COMMISSIONER

BY THE COUNCIL OF THE CITY OF MASON, OHIO ON THIS DAY OF 2008.

CHAIRMAN

CLERK

RECORDING

BY THE WARREN COUNTY, OHIO AUDITOR ON THIS DAY OF 2008.

AUDITOR

BY THE RECORDER: RECEIVED FOR RECORDING THIS DAY OF 2008. RECORDED IN BOOK PAGE FEE \$

RECORDER

AGENT FOR THE PETITIONERS

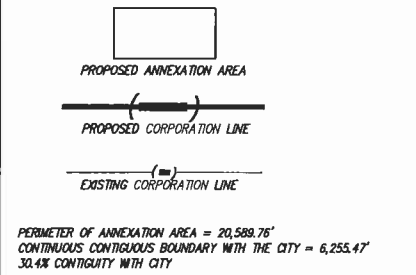
- NOTES: 1.) THIS ANNEXATION PLAT CONTAINS 103.606 +/- ACRES SITUATED IN DEERFIELD TOWNSHIP, WARREN COUNTY, OHIO. (1.884 ACRES IN SECTION 17 AND 101.742 ACRES IN SECTION 18). 2.) BEARINGS ARE BASED ON PLAT OF SURVEY RECORDED IN VOL. 55, PG. 54 OF THE WARREN COUNTY RECORDERS OFFICE. 3.) LENGTH OF ROADS INCLUDED IN THE PROPOSED ANNEXATION: INTERSTATE 71 = 1.11 MILES +/- KINGS ISLAND DRIVE = 0.06 MILES +/-

PROPERTY OUTSIDE ANNEXATION TERRITORY table with columns: NO., OWNER, DEED BOOK / PAGE, ACREAGE, LOT #, PLAT BOOK / PAGE, PARCEL ID #

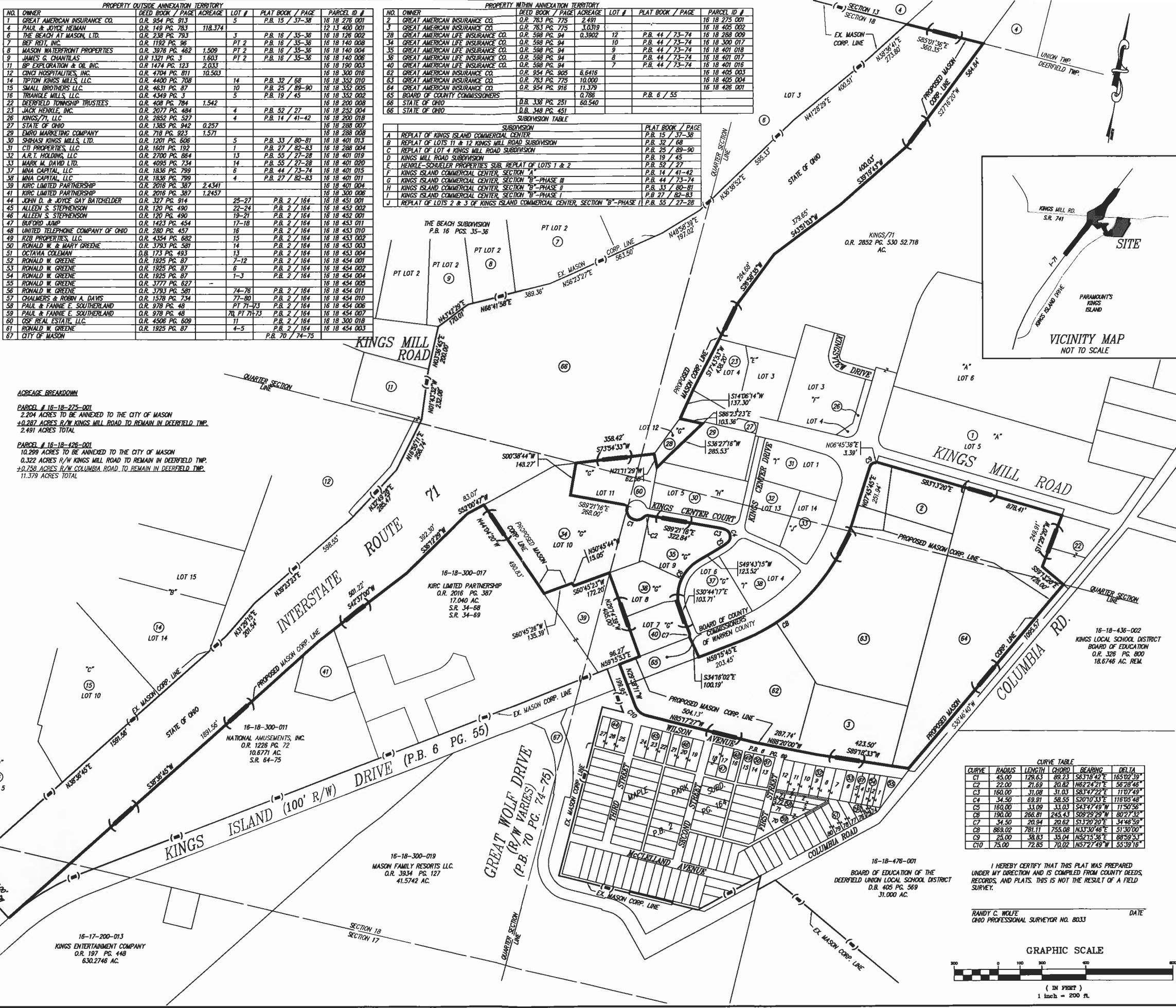
PROPERTY WITHIN ANNEXATION TERRITORY table with columns: NO., OWNER, DEED BOOK / PAGE, ACREAGE, LOT #, PLAT BOOK / PAGE, PARCEL ID #

SUBDIVISION TABLE with columns: SUBDIVISION, PLAT BOOK / PAGE

ACREAGE BREAKDOWN: PARCEL # 16-18-275-001 2.204 ACRES TO BE ANNEXED TO THE CITY OF MASON. PARCEL # 16-18-426-001 10.299 ACRES TO BE ANNEXED TO THE CITY OF MASON.



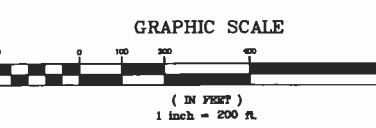
PERIMETER OF ANNEXATION AREA = 20,589.76' CONTINUOUS CONTIGUOUS BOUNDARY WITH THE CITY = 6,253.47' 30.4% CONTIGUITY WITH CITY



CURVE TABLE with columns: CURVE, RADIUS, LENGTH, CHORD, BEARING, DELTA

I HEREBY CERTIFY THAT THIS PLAT WAS PREPARED UNDER MY DIRECTION AND IS COMPILED FROM COUNTY DEEDS, RECORDS, AND PLATS. THIS IS NOT THE RESULT OF A FIELD SURVEY.

RANDY C. WOLFE OHIO PROFESSIONAL SURVEYOR NO. 8033 DATE



- REVISIONS: 1. ORIGINAL PLAT 11/20/04, 2. REVISED BOUNDARY 06/16/08, 3. REVISED BOUNDARY 06/23/08, 4. REVISED BOUNDARY 07/23/08, 5. REVISIONS PER WARREN COUNTY 8/6/08

MAP OF TERRITORY "GREAT AMERICAN" AREA TO BE ANNEXED TO THE CITY OF MASON FROM DEERFIELD TOWNSHIP SECTIONS 17 & 18, TOWN 4, RANGE 2 DEERFIELD TOWNSHIP WARREN COUNTY, OHIO

SCALE: 1"=200' DATE: 07/23/08 DRAWN: DSE DESIGNED: XREF: JOB NO.: 041170VB000 GREAT AMERICAN ANNEXATION

H:\engineering\2003-2004\p104\p104(1170)wvg\041170VB000.dwg, 8/8/2008 8:13:02 AM, rymt